

# Pukekohe Expressway

## and connections to State Highway 22

MAY 2020

We're proposing a new connection to improve safety and support the future movement of people and goods between the proposed Mill Road Corridor, State Highway 1 and Pukekohe town centre by providing an alternative route to State Highway 22.

As the area becomes more urban with population growth, the new Pukekohe Expressway will improve access to Paerata, Pukekohe, the future township of Drury West and other future urban growth areas. This will create a more pedestrian-friendly environment along SH22 with connections to public transport and walking and cycling pathways, helping to reduce traffic.

In 2018, we asked for your feedback on three options for a potential Pukekohe Expressway:

**Option A** – SH22 to the future Mill Road Corridor near Drury. This provides a direct connection from Pukekohe North, Pukekohe West and Paerata to a proposed new interchange between Ramarama and Drury.

**Option B** – Pukekohe East Road to a new interchange and future Mill Road Corridor at Drury. This provides a direct connection from Pukekohe East to a new interchange between Ramarama and Drury and passes through the middle of the Eastern Pukekohe Future Urban Zone.

**Option C** – Pukekohe East Road to Ramarama. This provides a direct link from Pukekohe East, through steep terrain, to the existing Ramarama interchange.

You told us that you supported a road from Drury to Pukekohe to reduce congestion on SH22 and Pukekohe East Road. The Franklin Local Board supported protecting the land for this road so that landowners and the community would have certainty about the road being built in the future.

### What we're proposing

We've considered three options for the Pukekohe Expressway.

**Option A** is our preferred option. This is a new road from the proposed SH1 interchange between Ramarama and Drury that would run to the south of the Transpower lines and connect to the proposed Pukekohe Urban Arterial.

This option doesn't impinge on the Future Urban Zone as it runs mostly through greenfield land. It also has less impact on the Ngākoroa Stream to the north.

Have a look at the map to see our preferred option along with the other options that were considered.

### State Highway 22 connections

Good connections to the Pukekohe Expressway are important to help people move around safely and easily.

Three new road connections are proposed to link SH22 and the planned new growth areas in Drury West and Paerata to the proposed Pukekohe Expressway which will provide an alternative route to SH22 for people to access Pukekohe and SH1.

The new arterials will support a growing population in the area and their travel choices in the future between SH22 and the Pukekohe Expressway. It will enable better movement of people within the area by providing access to employment, residential areas, town centres and a proposed train station. It'll also give the community better access to public transport, walking and cycling networks.

[supportinggrowth.govt.nz](https://supportinggrowth.govt.nz)

In 2018, we asked for your feedback on longer-term options for urban upgrades and the related Pukekohe Expressway (which would provide an alternative to SH22). The Waka Kotahi NZ Transport Agency also asked for your feedback on speed limits and safety improvements along SH22.

In the short term we're making SH22 safer by working on designs for a roundabout at the Glenbrook Road/SH22 intersection and safety barriers. In addition, we will also be reviewing the speed limit.

### What we're proposing

Preferred options for three new arterials are proposed including northern, central and southern connections from the new Pukekohe Expressway to SH22. This includes:

**Northern Connection:** between the proposed Pukekohe Expressway and Jesmond Road. This crosses the floodplain at a narrow point and gives good sight lines onto and from the Pukekohe Expressway.

**Central Connection:** between the proposed Pukekohe Expressway and Blackbridge Road. This gives good access to western areas such as Clarks Beach, Kingseat and Karaka. It also provides good sight lines onto and from the Pukekohe Expressway.

**Southern Connection:** between the new Pukekohe Expressway and the proposed Paerata Train Station. This connection integrates well with the proposed future train station at Paerata and future plans for development in the area.

For each connection, other options were also considered. Have a look at the maps to see more explanation of our preferred options and the other options we considered.

### Help shape the future

We are looking for your feedback on connections in this area.

The proposed connections will provide options for people who live in areas such as Clarks Beach and Kingseat to gain access to the State Highway network in an efficient way via the Pukekohe Expressway.

Providing easy access to the Pukekohe Expressway enables the downgrading of SH22 and the urbanisation of Drury around the road.

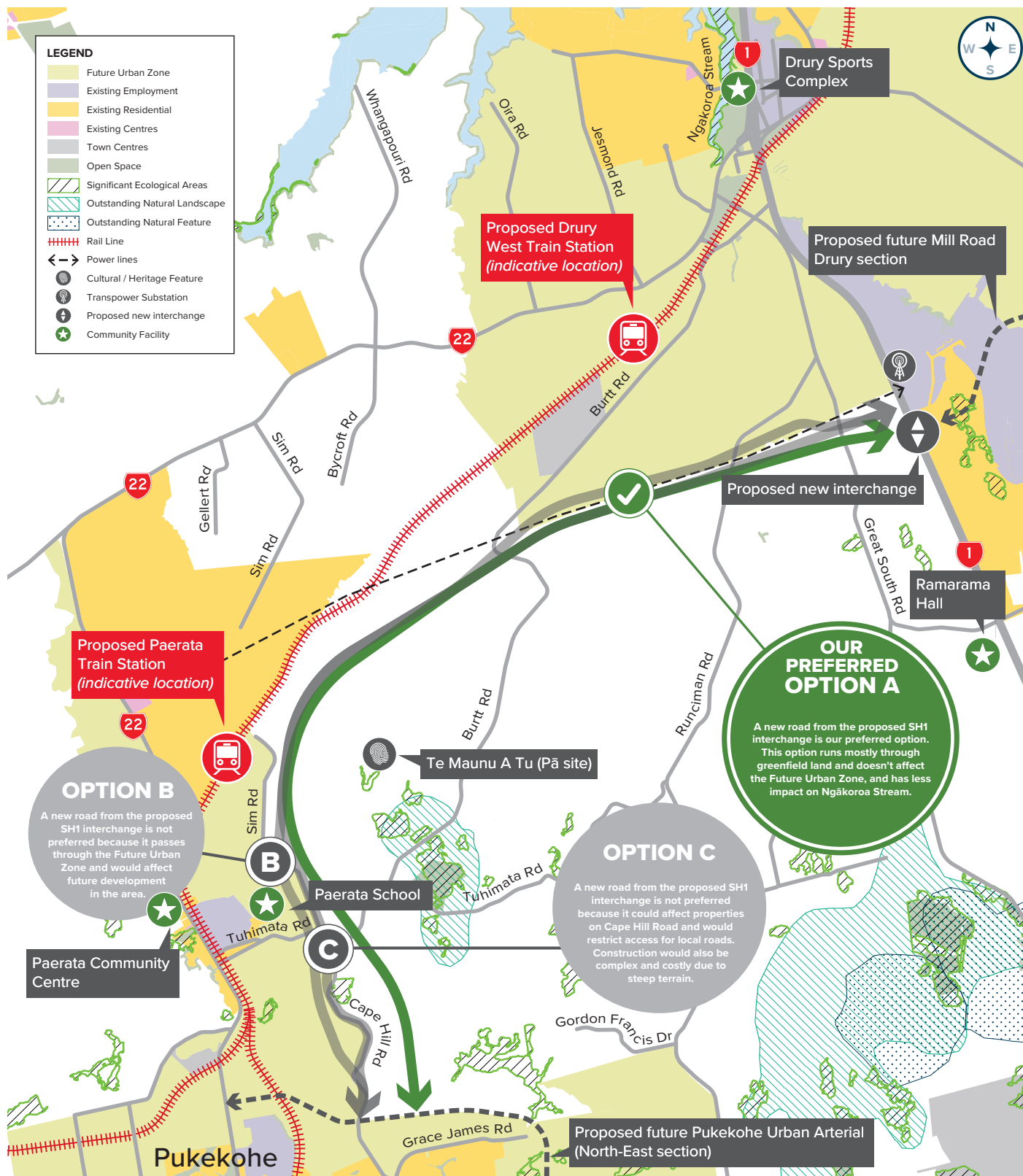
We'd like to know your thoughts.  
Use the feedback form or visit  
[supportinggrowth.govt.nz](https://supportinggrowth.govt.nz)  
to tell us what you think.



[supportinggrowth.govt.nz](https://supportinggrowth.govt.nz)

# Pukekohe Expressway

MAY 2020



The project shown on this map has been identified by an indicative business case and will require further technical investigation before its final detail, location or land requirement is confirmed. It is also yet to be prioritised for funding for delivery over the next 10-30 years.

[supportinggrowth.govt.nz](https://supportinggrowth.govt.nz)



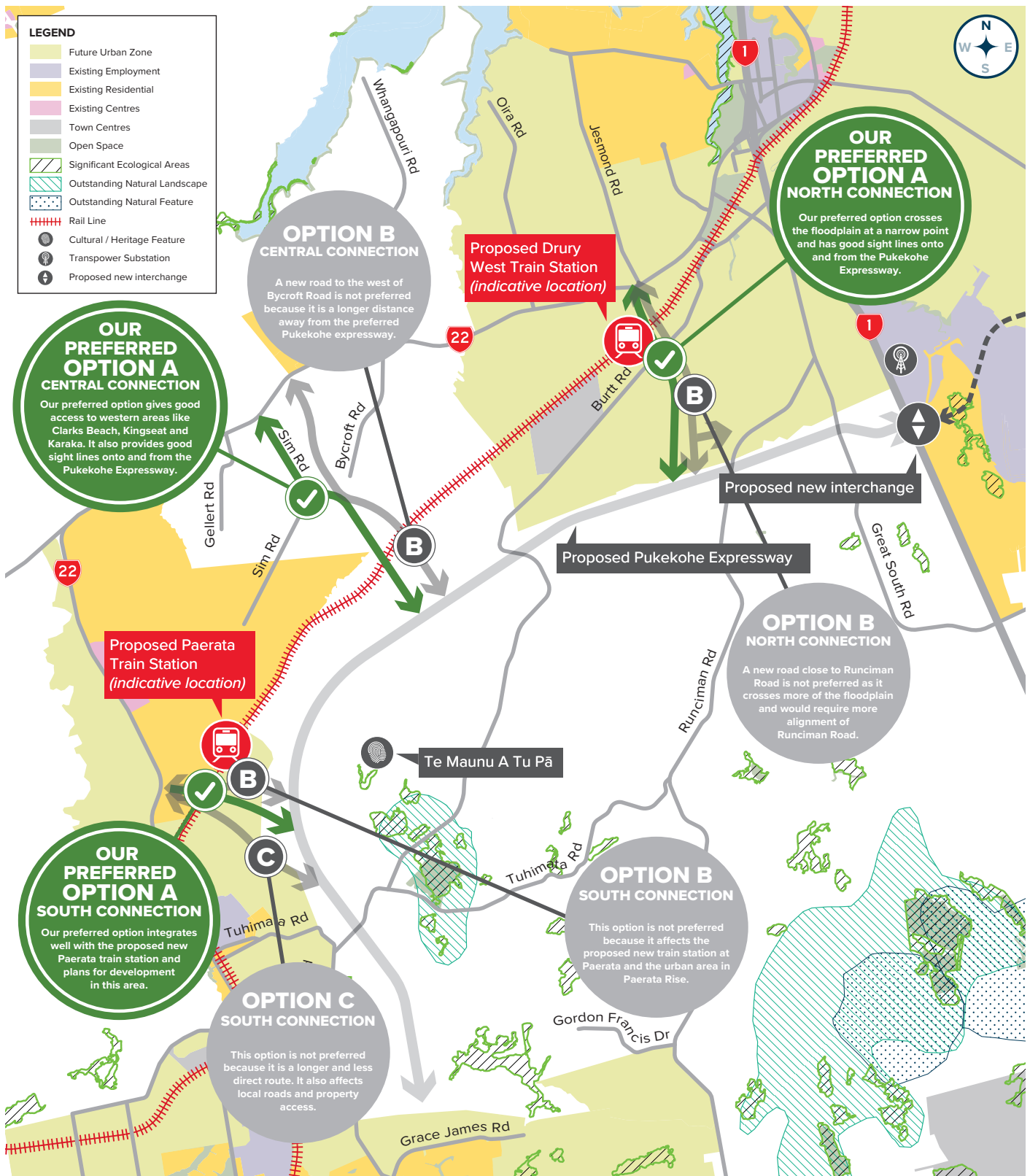
**WAKA KOTAHĪ**  
NZ TRANSPORT  
AGENCY

New Zealand Government

# State Highway 22

## Connections

MAY 2020



The project shown on this map has been identified by an indicative business case and will require further technical investigation before its final detail, location or land requirement is confirmed. It is also yet to be prioritised for funding for delivery over the next 10-30 years.

[supportinggrowth.govt.nz](https://supportinggrowth.govt.nz)



**WAKA KOTAHI**  
NZ TRANSPORT  
AGENCY

New Zealand Government