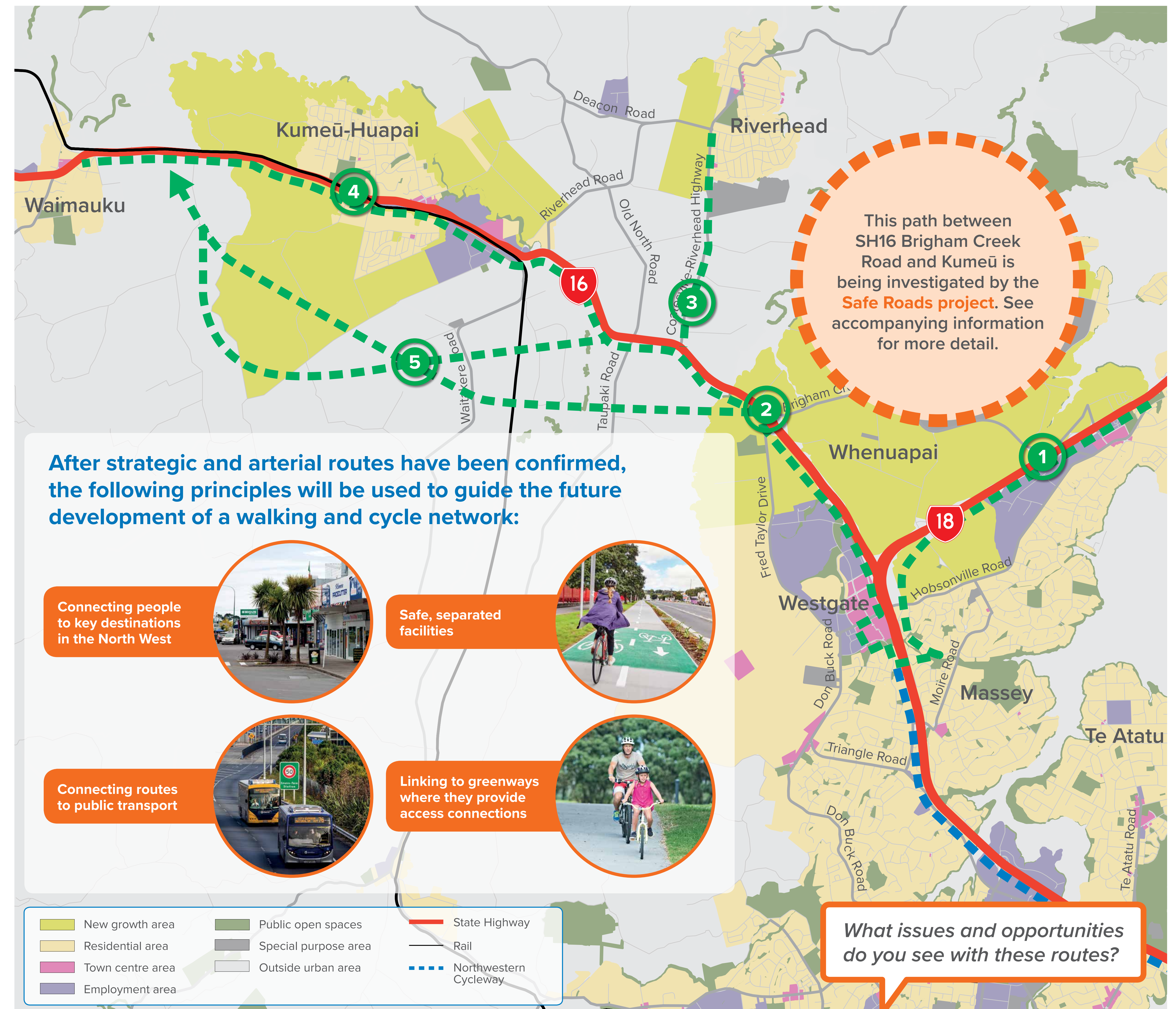


DEVELOPING A WALKING AND CYCLING NETWORK

We are planning now for a safe and easy-to-use walking and cycling network which will help shape the way communities develop in the North West over the next 30 years.

We are investigating a range of strategic routes we would like your feedback on:

- ① **State Highway 16/18 Upgrade**
 - Includes new off-road shared path between the existing Northwestern Cycleway and the Upper Harbour Bridge
 - Crosses to SH16 via local roads through Westgate
 - Continues along SH16 on the western side to Bringham Creek.
- ② **State Highway 16 – Bringham Creek Road to Kumeū**
 - New off-road shared path from Bringham Creek to Kumeū along the western side of SH16
 - Being investigated as part of the Safe Roads SH16 Bringham Creek to Waimauku project (refer to additional project information).
- ③ **Coatesville-Riverhead Highway**
 - Supporting Growth is investigating upgrades to Coatesville-Riverhead Highway to improve the connection between Riverhead and SH16. New off-road walking and cycling facilities are being considered as part of these upgrades.
- ④ **State Highway 16 – Kumeū-Huapai**
 - Auckland Transport's Huapai Triangle project will deliver walking and cycling improvements as part of its works in the short term
 - Supporting Growth is investigating longer term walking and cycling facilities on SH16 within Kumeū-Huapai. These would be developed to an urban standard enabling connections to the adjacent urban land uses.
- ⑤ **State Highway 16 Alternative Corridor**
 - A future walking and cycling connection is being investigated as part of the State Highway 16 Alternative Corridor. Refer to the 'Kumeū-Huapai Alternative State Highway Corridor' poster.



Projects within the programme will be prioritised for delivery over the next 30 years, subject to funding approvals. Projects will require statutory approvals and will be subject to the Resource Management Act, and Land Transport Management Act. All projects will be subject to further investigation to confirm land requirements, this will include further consultation on these options.