

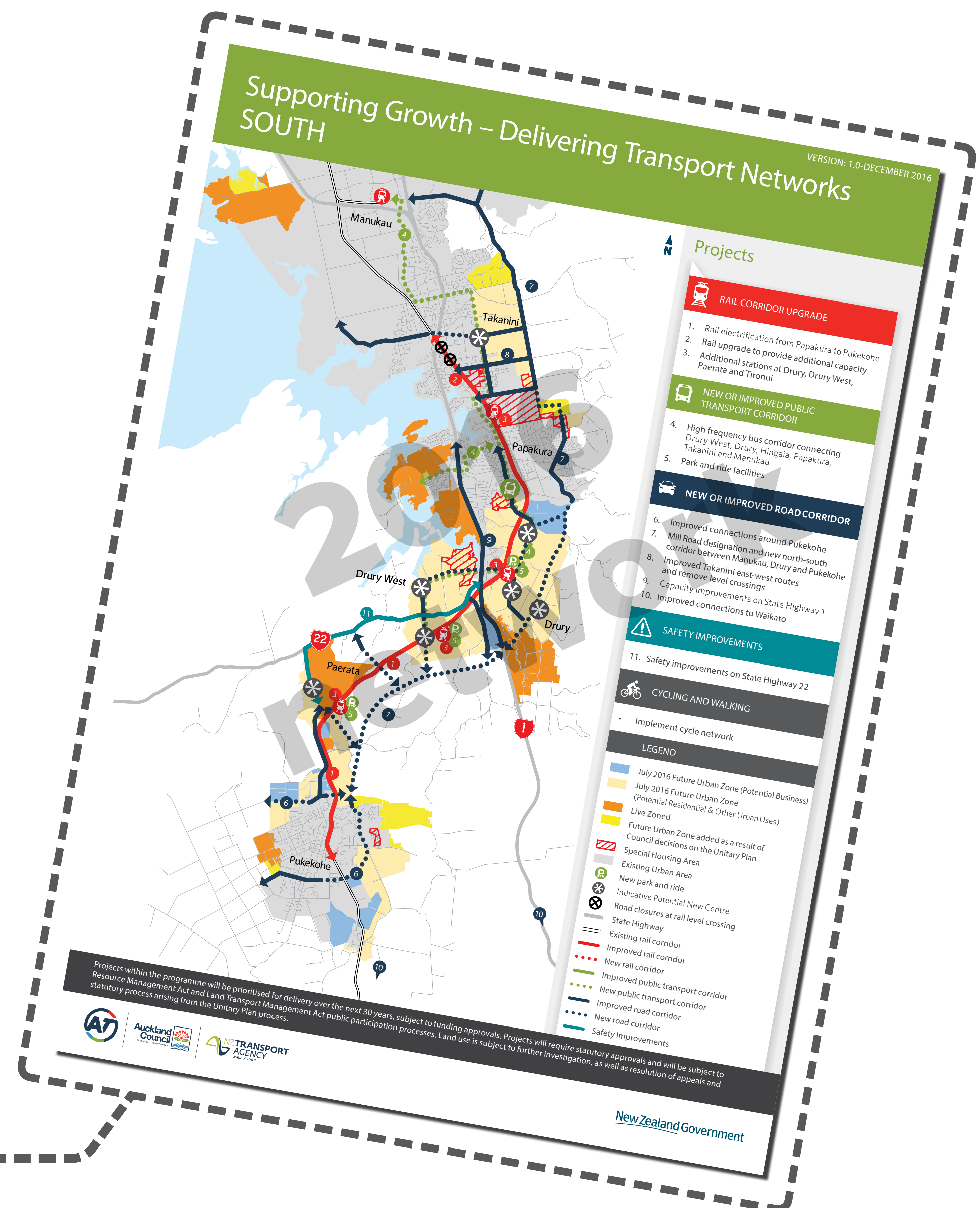
THE GROWTH STORY: PUKEKOHE, DRURY AND TAKĀNINI

Future urban areas in Pukekohe, Paerata, Drury, Opāheke and Takānini are expected to grow substantially over the next three decades with land identified for new homes and jobs. Some growth is also anticipated to the west in Kingseat and Clarks Beach. Significant new infrastructure will be needed to support this growth.

In 2016, you told us your transport aspirations for the southern growth areas

- Increase transport choice
- Separate shorter distance trips from longer distance trips
- Improve north-south movements
- Improve the resilience of the network
- Improve access to education, employment and recreation opportunities in the area.

A high level preferred transport network plan was published in 2016 to meet these aspirations and guide further stages of planning.



What has changed since 2016...

STRUCTURE PLANNING

- Structure planning for Drury and Opāheke has begun. The Future Urban Zone around Drury and Opāheke could be developed to accommodate about 62,000 people.
- Structure planning for Pukekohe and Paerata has begun and the current population could double in the next 30 years to around 64,000 people.

OTHER PLANNED GROWTH

- Planning in north Waikato has identified that Pokeno and Tuakau could accommodate more than 22,000 people by 2046.
- The Future Urban Land Supply Strategy (Refresh 2017) identifies the need for an additional:
 - 5,000 homes at Takānini
 - 1,842 homes at Kingseat
 - 1,351 homes at Clarks Beach.

EARLY TRANSPORT PROJECTS

- State Highway 1 Improvements: Papakura to Bombay (investigation)
- State Highway 22 Safe Road Improvements (investigation)
- Papakura to Pukekohe rail electrification (investigation)
- Airport to Botany Rapid Transit study (investigation).

WHAT NEXT?

As a result of these changes, we have confirmed and refined the 2016 Preferred Network and now have some new options for:

- **WALKING AND CYCLING**
- **PUBLIC TRANSPORT**
- **STRATEGIC CONNECTIONS**
- **LOCAL CONNECTIONS**
- **DRAFT LAND USE PLANS.**